



Tower II

Leon Paul Equipment



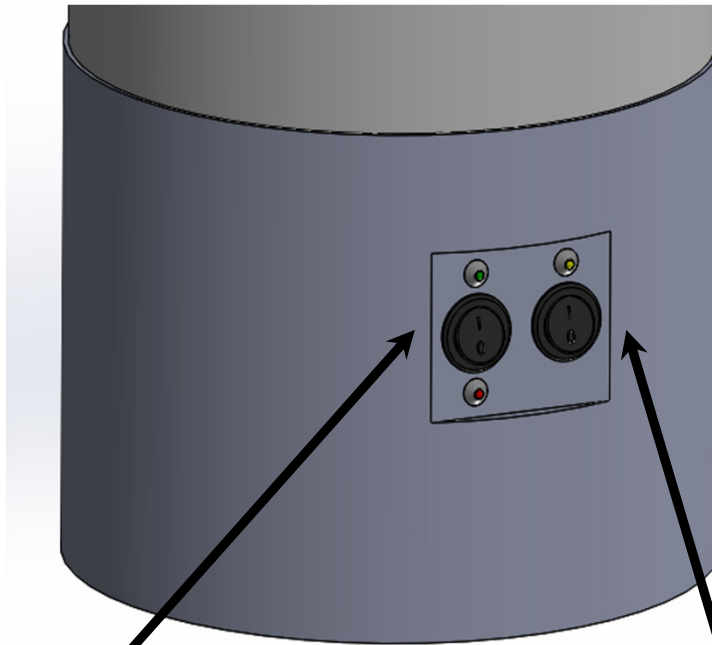
Content:

- 2 x Cylindrical towers
- 2 x Expandable stands
- 2 x 12v Dc PSU's
- 2 x IEC to UK mains leads
- 2 x 12v Dc extension cables
- 4 x 5m RJ45 to XLR RJ45 network cables

Overview

- All of the towers are identical, so it does not matter if the sets get mixed up.
- Each towers FRONT colour is determined using the colour switch.
- The unit has 4 modes of operation
 - 1 tower used for one piste signalling both red and green on one unit.
 - 2 towers used for one piste, one red, one green.
 - 2 towers used as repeaters for two different pistes back to back.
 - 2 towers used for a finals set up, where hits are echoed from the front to the back.

Front of tower controls



Colour select

For the front of the tower, select either GREEN or RED using the switch.
If RED is selected, then RED will score on the front and Green on the rear or vice versa.

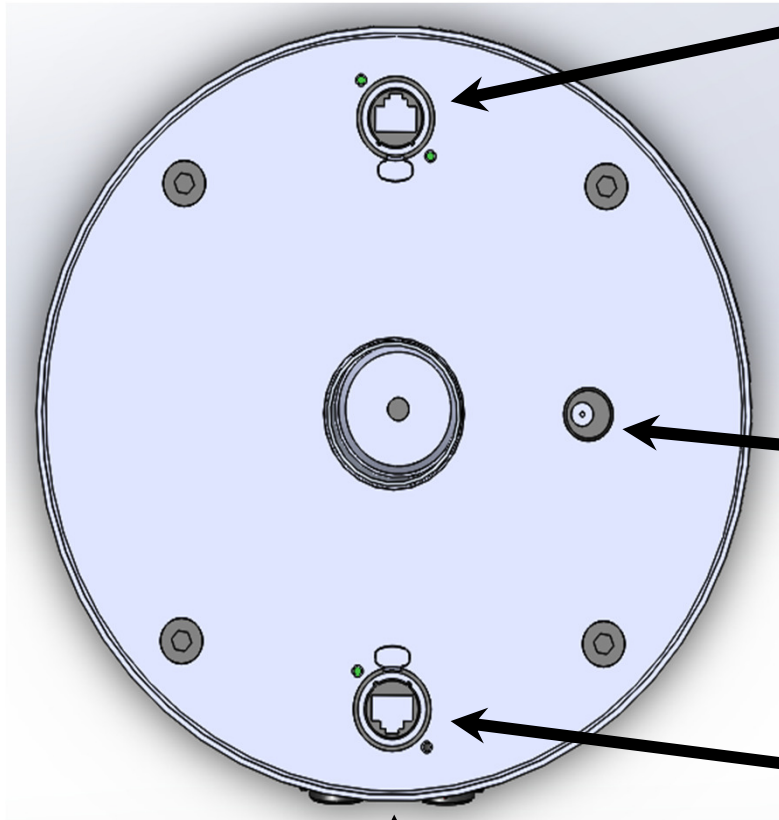
Finals mode

When selected, the yellow LED will be lit.

In this mode, all hits scored on the front are echoed to the back simultaneously.

Only the front piste RJ45 will be active. (You don't have to remove the rear piste RJ45, in this mode these inputs are ignored.)

Connections

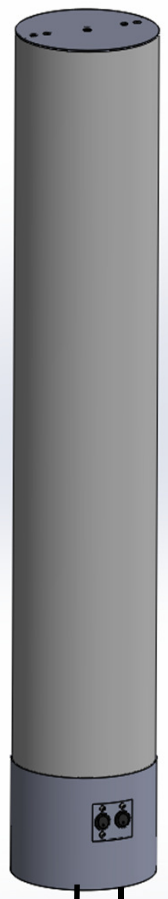


Rear piste
RJ45 / XLR
socket

12v DC
2.5mm power
socket

Front piste
RJ45 / XLR
socket

Front of the
tower



CSG12
WSG31
CSG31

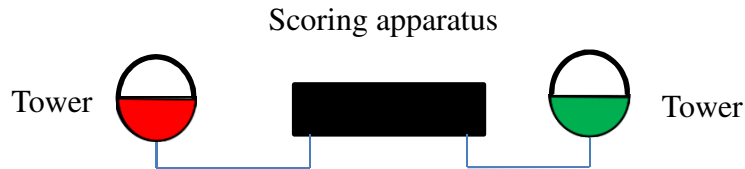
Extension
light cat5
cables

240v AC to
12v DC
PSU's

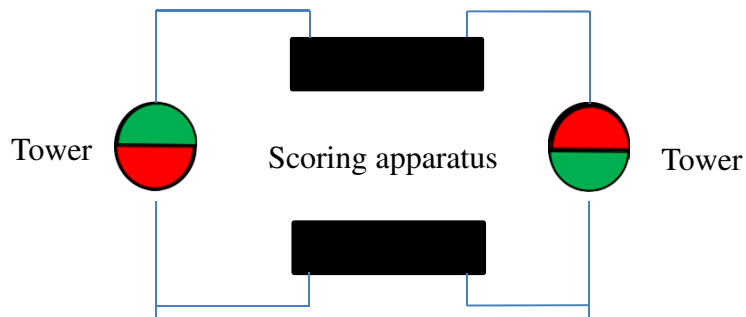
Single piste, single tower



Single piste, two towers



Two pistes, two towers



Finals mode, one piste

